

# GARA REGIONALE PER LA FORNITURA DI "MATERIALE DI CONSUMO PER CHIRURGIA MAXILLO FACCIALE"

N° gara 5562108 - CIG 5720512BD4

**NEUROMED LOTTO 2 - Prodotti listino -**

**Listino Biomet Microfixation  
ns.rif. 168-191015BM**

		<b>APPLICARE SCONTO DEL 30%</b>			
codice	regular plates -	Prezzo €	CND	N.rep	Iva
01-7136	1.5 2x3 Hole Rectangle	€ 102,00	P9099	108811	4%
01-7137	1.5 2x4 Hole Rectangle	€ 102,00	P9099	108811	4%
01-7345	1.5 2 Hole Med Straight	€ 46,00	P9099	108811	4%
01-7347	1.5 2 Hole Long Straight	€ 46,00	P9099	108811	4%
01-7040	1.5 4 Hole Reg Straight	€ 57,00	P9099	108811	4%
01-7045	1.5 4 Hole Med Straight	€ 57,00	P9099	108811	4%
01-7047	1.5 4 Hole Long Straight	€ 57,00	P9099	108811	4%
01-7050	1.5 6 Hole Reg Straight	€ 57,00	P9099	108811	4%
01-7057	1.5 6 Hole Long Straight	€ 61,00	P9099	108811	4%
01-7062	1.5 8 Hole Reg Straight	€ 61,00	P9099	108811	4%
01-7066	1.5 16 Hole Reg Straight	€ 56,00	P9099	108811	4%
01-7126	1.5 6 Hole Orbital	€ 76,00	P9099	108811	4%
01-7128	1.5 8 Hole Orbital	€ 91,00	P9099	108811	4%
01-7130	1.5 10 Hole Orbital	€ 91,00	P9099	108811	4%
01-7070	1.5 2/2 Hole Left Reg L	€ 79,00	P9099	108811	4%
01-7071	1.5 2/2 Hole Right Reg L	€ 79,00	P9099	108811	4%
01-7074	1.5 2/2 Hole Left Med L	€ 79,00	P9099	108811	4%
01-7075	1.5 2/2 Hole Right Med L	€ 79,00	P9099	108811	4%
01-7078	1.5 2/2 Hole Left Long L	€ 79,00	P9099	108811	4%
01-7079	1.5 2/2 Hole Right Long L	€ 79,00	P9099	108811	4%
01-7032	1.5 3/3 Hole 100* Left Med L	€ 76,00	P9099	108811	4%
01-7033	1.5 3/3 Hole 100* Right Med L	€ 76,00	P9099	108811	4%
01-7036	1.5 3/3 Hole 100* Left Xlong L	€ 64,00	P9099	108811	4%
01-7037	1.5 3/3 Hole 100* Right Xlongl	€ 76,00	P9099	108811	4%
01-7038	Plate 1.5/0.6 4x6 Lt Lng L	€ 87,00	P9099	108811	4%
01-7039	Plate 1.5/0.6 4x6 Rt Lng L	€ 87,00	P9099	108811	4%
01-7085	1.5 2/2 Hole Left Med Z	€ 64,00	P9099	108811	4%
01-7086	1.5 2/2 Hole Right Med Z	€ 64,00	P9099	108811	4%
01-7090	1.5 3/3 Hole Reg T	€ 79,00	P9099	108811	4%
01-7100	1.5 5 Hole Reg Y	€ 91,00	P9099	108811	4%
01-7102	1.5 5 Hole Long Y	€ 91,00	P9099	108811	4%
01-7104	1.5 5 Hole Xlong Y	€ 91,00	P9099	108811	4%
01-7106	Sm Orbital Floor Mesh	€ 187,00	P9099	108811	4%
01-7107	Med Orbital Floor Mesh	€ 187,00	P9099	108811	4%
01-7108	Lrg Orbital Floor Mesh	€ 187,00	P9099	108811	4%
01-7109	Noe Mesh	€ 187,00	P9099	108811	4%
01-7110	1.5 6 Hole Reg Double Y	€ 91,00	P9099	108811	4%
01-7112	1.5 6 Hole Long Double Y	€ 91,00	P9099	108811	4%
01-7114	1.5 6 Hole Xlong Double Y	€ 91,00	P9099	108811	4%
	Orbital plates - 1.5mm				
01-7121	Orbital Hx1.5/0.5 Curved Plate	€ 113,00	P9099	108811	4%
01-7122	18hole Orbital Hx1.5/0.5 Plate	€ 121,00	P9099	108811	4%

01-7123	4-hole Orbital Hx1.5/0.5 Plate	€ 106,00	P9099	108811	4%
	Rigid plates - Gold, 0.6mm				
01-8689	Plate, Rgd 1.5/0.6 14hole Crvd	€ 121,00	P9099	108811	4%
01-8664	Plate, Rgd 1.5/0.6 4 Hole	€ 76,00	P9099	108811	4%
01-8670	Plate,rgd 1.5/0.6 20 Str	€ 177,00	P9099	108811	4%
01-8662	Plate, Rgd 1.5/0.6 8 Reg Str	€ 98,00	P9099	108811	4%
01-8678	Plate Rgd 1.5/0.6 2x2 Lt Lng L	€ 142,00	P9099	108811	4%
01-8679	Plate Rgd 1.5/0.6 2x2 Rt Lng L	€ 142,00	P9099	108811	4%
01-8636	Plate Rgd 1.5/0.6 3x3 Lt Lng L	€ 131,00	P9099	108811	4%
01-8637	Plate Rgd 1.5/0.6 3x3 Rt Lng L	€ 131,00	P9099	108811	4%
01-8680	Plate Rgd 1.5/0.6 4x6 Lt Lng	€ 113,00	P9099	108811	4%
01-8681	Plate Rgd 1.5/0.6 4x6 Rt Lng L	€ 113,00	P9099	108811	4%
01-8604	Plate, Rgd 1.5/0.6 Xlng Y	€ 131,00	P9099	108811	4%
SP-2618	Pl,rgd 1.5/0.6 6hole Reg Dbl Y	€ 782,00	P9099	108811	4%
SP-2619	Pl,rgd 1.5/0.6 6hole Xl Dbl Y	€ 838,00	P9099	108811	4%
	Orbital Floor plates				
01-7106	Sm Orbital Floor Mesh	€ 187,00	P9099	108811	4%
01-7107	Med Orbital Floor Mesh	€ 187,00	P9099	108811	4%
01-7108	Lrg Orbital Floor Mesh	€ 187,00	P9099	108811	4%
01-7109	Noe Mesh	€ 187,00	P9099	108811	4%
	Mesh panel- Silver				
01-7180	Regular Grid Panel .6x80x53mm	€ 224,00	P9099	108811	4%
01-7182	1.5/0.6 85x53mm Small Panel	€ 243,00	P9099	108811	4%
01-7185	1.5/0.3 85x53mm Small Panel	€ 231,00	P9099	108811	4%
SP-1865	Orbital Floor Mesh	€ 406,00	P9099	108811	4%
01-7340	1.0/1.5mm TI Sheet 85 X 50	€ 222,00	P9099	108811	4%
	Midface plates 1.5mm - screws				
95-6103	1.5x3.5mm Ht Sd X-dr Scr,5-pk	€ 181,00	P9099	108811	4%
95-6104	1.5x4mm Ht Sd X-dr Scr,5-pk	€ 181,00	P9099	108811	4%
95-6105X	1.65x5mm Ht Sd X-dr Scr, 5-pk	€ 181,00	P9099	108811	4%
95-6106	1.5x6mm Ht Sd X-dr Scr,5-pk	€ 181,00	P9099	108811	4%
95-6107	1.5x7mm Ht Sd X-dr Scr,5-pk	€ 185,00	P9099	108811	4%
95-1503	1.5x3.5mm Ht X-dr Scr,5/pk	€ 110,00	P9099	108811	4%
95-1504	1.5x4mm Ht X-dr Scr,5/pk	€ 110,00	P9099	108811	4%
95-1505	1.5x5mm Ht X-dr Scr,5/pk	€ 110,00	P9099	108811	4%
95-1506	1.5x6mm Ht X-dr Scr,5/pk	€ 110,00	P9099	108811	4%
95-1507	1.5x7mm Ht X-dr Scr,5/pk	€ 110,00	P9099	108811	4%
95-1508	1.5x8mm Ht X-dr Scr,5/pk	€ 110,00	P9099	108811	4%
95-1509	1.5x9mm Ht X-dr Scr,5/pk	€ 110,00	P9099	108811	4%
95-1511	1.5x11mm Ht X-dr Scr,5/pk	€ 110,00	P9099	108811	4%
95-1513	1.5x13mm Ht X-dr Scr,5/pk	€ 110,00	P9099	108811	4%
95-1515	1.5x15mm Ht X-dr Scr,5/pk	€ 136,00	P9099	108811	4%
95-1803	1.8x3.5mm Ht X-dr Scr,5/pk	€ 110,00	P9099	108811	4%
95-1805	1.8x5mm Ht X-dr Scr,5/pk	€ 110,00	P9099	108811	4%
95-1807	1.8x7mm Ht X-dr Scr,5/pk	€ 196,00	P9099	108811	4%
95-1809	1.8x9mm Ht X-dr Scr,5/pk	€ 95,00	P9099	108811	4%
	Blades - Drills				
SP-1889	2.0x7mm Bone Reduction Blade	€ 302,00	L0910099	108819	22%
15-1194	1.5 Mm Ht X-lock Short Blade	€ 155,00	L0910099	108819	22%
15-1196	1.5 Mm Ht X-lock Std Blade	€ 155,00	L0910099	108819	22%

01-7142	Tw Drill,1.1x50mm,5mmstop,w/nt	€ 132,00	L0910099	108819	22%
01-7144	Tw Drill,1.1x50mm,7mmstop,w/nt	€ 132,00	L0910099	108819	22%
01-7146	Tw Drill,1.1x50mm,9mmstop,w/nt	€ 132,00	L0910099	108819	22%
01-7148	Tw Drill,1.1x50mm,15mmstp,w/nt	€ 132,00	L0910099	108819	22%
	Mandible plates 2.0/2.3 plates - Silver				
42-1004	Plt,4 Hole Str W/gap, 1.0mm	€ 149,00	P9099	108811	4%
42-1005	Plate, 2x7 Str Matrix, 1.0mm	€ 275,00	P9099	108811	4%
42-1006	Plate, 2x7 Crvd Matrix, 1.0mm	€ 275,00	P9099	108811	4%
SP-2284	Plt, 4 Hole Str, 1.0mm	€ 216,00	P9099	108811	4%
SP-2375	Special Plates silver 2,0/2,3	€ 190,00	P9099	108811	4%
SP-2376	Special Plates silver 2,0/2,3	€ 190,00	P9099	108811	4%
42-1016	Plate, 16 Hole Str, 1.0mm	€ 172,00	P9099	108811	4%
42-1002	Plate, Lng Y, 1.0mm	€ 187,00	P9099	108811	4%
42-1003	Plate, 7 Hole Crvd, 1.0mm	€ 187,00	P9099	108811	4%
SP-2665	Plate, Double Y, 1.0 Mm	€ 838,00	P9099	108811	4%
SP-2705	Plate, Double Y Small, 1.0mm	€ 652,00	P9099	108811	4%
	Plates - Gold - 1.6mm				
SP-2630	Plate, 2x7 Str Matrix, 1.6mm	€ 838,00	P9099	108811	4%
SP-2631	Plate, 2x7 Crvd Matrix, 1.6mm	€ 916,00	P9099	108811	4%
43-1004	Plate, 4 Hole Str W/gap, 1.6mm	€ 157,00	P9099	108811	4%
43-1005	Plate, 4 Hole Straight, 1.6mm	€ 142,00	P9099	108811	4%
43-1007	Plate, 7 Hole Str, 1.6mm	€ 142,00	P9099	108811	4%
43-1008	Plate, 7 Hole Curved, 1.6mm	€ 157,00	P9099	108811	4%
43-1016	Plate, 16 Hole Str, 1.6mm	€ 172,00	P9099	108811	4%
SP-2631	Plate, 2x7 Crvd Matrix, 1.6mm	€ 916,00	P9099	108811	4%
SP-2703	Plt, 6 Hole Str W/gap, 1.6mm	€ 485,00	P9099	108811	4%
43-1001	Plate, Small Angle, 1.6mm	€ 172,00	P9099	108811	4%
	Plates - Blue, 2.0mm				
44-1024	Plate, 24 Hole Str, 2.0mm	€ 287,00	P9099	108811	4%
44-1012	Plate, 12 Hole Str, 2.0mm	€ 231,00	P9099	108811	4%
44-1002	Plate, Small Dbl Angle, 2.0mm	€ 287,00	P9099	108811	4%
44-1003	Plate, Med Dbl Angle, 2.0mm	€ 317,00	P9099	108811	4%
44-1001	Plate, Large Angle, 2.0mm	€ 753,00	P9099	108811	4%
44-1018	Plate,sml Dbl Angle Str., 2.0m	€ 429,00	P9099	108811	4%
44-1021	Plate, Large Angle Str., 2.0mm	€ 488,00	P9099	108811	4%
44-1022	Plate,med Dbl Angle Str.,2.0mm	€ 458,00	P9099	108811	4%
	Plates - Magenta, 2.6mm				
44-1005	Plate, Large Angle, 2.6mm	€ 574,00	P9099	108811	4%
44-1023	Plate,large Angle Str.,2.6mm	€ 574,00	P9099	108811	4%
	Plate Templates				
46-1001T	Template, Large Angle	€ 181,00	L0910099	108819	22%
46-1002T	Template, Double Angle	€ 245,00	L0910099	108819	22%
46-1003T	Template, Med Double Angle	€ 224,00	L0910099	108819	22%
46-1018T	Template, Small Dbl Angle Str.	€ 173,00	L0910099	108819	22%
46-1021T	Template, Large Angle Straight	€ 173,00	L0910099	108819	22%
46-1022T	Template, Med Dbl Angle Str.	€ 173,00	L0910099	108819	22%
46-1024T	Template, 24 Hole Str	€ 181,00	L0910099	108819	22%
	Specialty items				
SP-2623	Plate, Large Angle, 2.8mm	€ 485,00	P9099	108811	4%

SP-2585	2.0/.6mm 4 Hole Straight Plate	€ 485,00	P9099	108811	4%
	Screws				
	2.0mm X-Drive Non-Locking				
41-2205	Screw, 2.0x5mm Self Drilling	€ 45,00	P9099	108811	4%
41-2207	Screw, 2.0x7mm Self Drilling	€ 45,00	P9099	108811	4%
41-2005	Screw, 2.0x5mm Cross Drive	€ 45,00	P9099	108811	4%
41-2006	Screw, 2.0x6mm Cross-drive	€ 38,00	P9099	108811	4%
41-2008	Screw, 2.0x8mm Cross-drive	€ 41,00	P9099	108811	4%
41-2010	Screw, 2.0x10mm Cross-drive	€ 45,00	P9099	108811	4%
41-2012	Screw, 2.0x12mm Cross-drive	€ 45,00	P9099	108811	4%
41-2014	Screw, 2.0x14mm Cross-drive	€ 49,00	P9099	108811	4%
41-2016	Screw, 2.0x16mm Cross-drive	€ 53,00	P9099	108811	4%
41-2018	Screw, 2.0x18mm Cross-drive	€ 56,00	P9099	108811	4%
	2.0mm X-Drive Locking Screws				
41-2106	Screw, 2.0x6mm X-drv Locking	€ 60,00	P9099	108811	4%
41-2108	Screw, 2.0x8mm X-drv Locking	€ 64,00	P9099	108811	4%
41-2110	Screw, 2.0x10mm X-drv Locking	€ 68,00	P9099	108811	4%
41-2112	Screw, 2.0x12mm X-drv Locking	€ 68,00	P9099	108811	4%
41-2114	Screw, 2.0x14mm X-drv Locking	€ 71,00	P9099	108811	4%
41-2116	Screw, 2.0x16mm X-drv Locking	€ 76,00	P9099	108811	4%
41-2118	Screw, 2.0x18mm X-drv Locking	€ 76,00	P9099	108811	4%
	Mandible plates 2.0/2.3				
	screws 2.3mm X-Drive Non-Locking Sews				
41-2305	Screw, 2.3x5mm Cross-drive	€ 45,00	P9099	108811	4%
41-2306	Screw, 2.3x6mm Cross-drive	€ 45,00	P9099	108811	4%
41-2308	Screw, 2.3x8mm Cross-drive	€ 49,00	P9099	108811	4%
41-2310	Screw, 2.3x10mm Cross-drive	€ 53,00	P9099	108811	4%
41-2312	Screw, 2.3x12mm Cross-drive	€ 56,00	P9099	108811	4%
41-2314	Screw, 2.3x14mm Cross-drive	€ 56,00	P9099	108811	4%
41-2316	Screw, 2.3x16mm Cross-drive	€ 60,00	P9099	108811	4%
41-2318	Screw, 2.3x18mm Cross-drive	€ 64,00	P9099	108811	4%
41-2406	Screw, 2.3x6mm X-drv Locking	€ 75,00	P9099	108811	4%
41-2408	Screw, 2.3x8mm X-drv Locking	€ 75,00	P9099	108811	4%
41-2410	Screw, 2.3x10mm X-drv Locking	€ 75,00	P9099	108811	4%
41-2412	Screw, 2.3x12mm X-drv Locking	€ 75,00	P9099	108811	4%
41-2414	Screw, 2.3x14mm X-drv Locking	€ 79,00	P9099	108811	4%
41-2416	Screw, 2.3x16mm X-drv Locking	€ 79,00	P9099	108811	4%
41-2418	Screw, 2.3x18mm X-drv Locking	€ 79,00	P9099	108811	4%
	2.7mm X-Drive Non-Locking Screws				
41-2706	Screw, 2.7x6mm X-drv Emer	€ 57,00	P9099	108811	4%
41-2708	Screw, 2.7x8mm X-drv Emer	€ 49,00	P9099	108811	4%
41-2710	Screw, 2.7x10mm X-drv Emer	€ 53,00	P9099	108811	4%
41-2712	Screw, 2.7x12mm X-drv Emer	€ 56,00	P9099	108811	4%
41-2714	Screw, 2.7x14mm X-drv Emer	€ 56,00	P9099	108811	4%
41-2716	Screw, 2.7x16mm X-drv Emer	€ 60,00	P9099	108811	4%
41-2718	Screw, 2.7x18mm X-drv Emer	€ 64,00	P9099	108811	4%
	2.0mm Self-Drilling IMF screws				
91-5607	2.0 X 7mm Sd Imf Hex Screw	€ 112,00	P9099	108811	4%
91-5609	2.0 X 9mm Sd Imf Hex Screw	€ 112,00	P9099	108811	4%
91-5611	2.0 X 11mm Sd Imf Hex Screw	€ 112,00	P9099	108811	4%
	Drills				
01-9192	Tw Drill,1.5x50mm,5mm Stp,w/nt	€ 155,00	L0910099	108819	22%
01-9193	Tw Drill,1.5x50mm,7mm Stp,w/nt	€ 155,00	L0910099	108819	22%

46-1004	Drill, 1.8x115mm, 26mm Stop	€ 153,00	L0910099	108819	22%
46-1006	Drill, 1.6x50mm 22mm Stop	€ 153,00	L0910099	108819	22%
46-1007	Drill, 1.6x115mm 26mm Stop	€ 153,00	L0910099	108819	22%
24-2050	1.8x50mm Drill,26mm Stp	€ 155,00	L0910099	108819	22%
	Blades				
46-1005	Traumaone Blade, Cross Drive	€ 142,00	L0910099	108819	22%
46-0011	Traumaone, Imf Blade	€ 172,00	L0910099	108819	22%
	Instrumentation				
	Midface				
01-7390	Green 1.5/2.0 Handle	€ 674,00	L0910099	108819	22%
01-7167	1.5mm, 3-prong Plate Bender	€ 395,00	L0910099	108819	22%
01-9728	2.0 Plate Bending Pliers	€ 377,00	L0910099	108819	22%
01-7172	1.0/1.5mm System Cut Plt/wr Ct	€ 267,00	L0910099	108819	22%
01-7186	1.5 Mm Plate Holding Wand	€ 237,00	L0910099	108819	22%
01-9095	Beuse Plate Holding Forceps -	€ 279,00	L0910099	108819	22%
46-0016	T-bar Handle	€ 1.367,00	L0910099	108819	22%
SP-2243	Fernandes Orbital Retractor	€ 1.304,00	L0910099	108819	22%
	Mandible				
46-0001	Plate Bender	€ 2.430,00	L0910099	108819	22%
46-0002	Instr, Plate Cutter	€ 2.279,00	L0910099	108819	22%
46-0004	T1 Bone Reduction Forceps	€ 456,00	L0910099	108819	22%
46-0005	T1 Plate Holding Forceps	€ 456,00	L0910099	108819	22%
46-0006	Instr, Drill Guide With Handle	€ 1.520,00	L0910099	108819	22%
01-9125	Depth Gage 2.0/2.4,45mm,long	€ 1.317,00	L0910099	108819	22%
46-0009	Instr, Bending Pliers	€ 911,00	L0910099	108819	22%
46-0012	Trocar Handle	€ 1.215,00	L0910099	108819	22%
46-0013	Trocar	€ 275,00	L0910099	108819	22%
46-0014	Cheek Retractor	€ 1.387,00	L0910099	108819	22%
46-0015	Drill Guide	€ 671,00	L0910099	108819	22%
46-0007	Non-ratcheting Handle	€ 685,00	L0910099	108819	22%
46-0008	Instr, Ratcheting Screwdriver	€ 1.520,00	L0910099	108819	22%
01-2788	Plate Deburr Diamond,jnotch	€ 149,00	L0910099	108819	22%
01-0371	Lorenz F/o Inst Cable,10',acmi	€ 610,00	L0910099	108819	22%
	Container/Trays				
46-1501	Midface Screw Container	€ 2.328,00	L0910099	108819	22%
46-1502	Midface Plate Container	€ 2.125,00	L0910099	108819	22%
46-1503	Traumaone Mandible Screw Cont	€ 2.273,00	L0910099	108819	22%
46-1504	Traumaone Mandible Plate Cont	€ 2.125,00	L0910099	108819	22%
46-1611	Midface Insert Tray	€ 821,00	L0910099	108819	22%
46-1620	Trauma1 Outer Tray, Mandibular	€ 1.539,00	L0910099	108819	22%
46-1621	Mandibular Insert Tray	€ 1.021,00	L0910099	108819	22%



# GARA REGIONALE PER LA FORNITURA DI "MATERIALE DI CONSUMO PER CHIRURGIA MAXILLO FACCIALE"

N° gara 5562108 - CIG 5720512BD4

**NEUROMED LOTTO 2 - Prodotti listino -**

**Listino Biomet Microfixation  
ns.rif. 168-191015BM**

		APPLICARE SCONTO DEL 30%			
codice	Midface Plating System	Prezzo €	CND	N.rep.	Iva
01-7136	Midface plates 1.5mm	€ 102,00	P9099	108811	4%
01-7137	1.5 2x3 Hole Rectangle	€ 102,00	P9099	108811	4%
01-7345	1.5 2x4 Hole Rectangle	€ 46,00	P9099	108811	4%
01-7347	1.5 2 Hole Med Straight	€ 46,00	P9099	108811	4%
01-7040	1.5 2 Hole Long Straight	€ 57,00	P9099	108811	4%
01-7045	1.5 4 Hole Reg Straight	€ 57,00	P9099	108811	4%
01-7047	1.5 4 Hole Med Straight	€ 57,00	P9099	108811	4%
01-7048	1.5 4 Hole Long Straight	€ 57,00	P9099	108811	4%
01-7050	1.5 4 Hole Xlong Straight	€ 57,00	P9099	108811	4%
01-7055	1.5 6 Hole Reg Straight	€ 61,00	P9099	108811	4%
01-7057	1.5 6 Hole Med Straight	€ 61,00	P9099	108811	4%
01-7062	1.5 6 Hole Long Straight	€ 61,00	P9099	108811	4%
01-7126	1.5 8 Hole Reg Straight	€ 76,00	P9099	108811	4%
01-7128	1.5 6 Hole Orbital	€ 91,00	P9099	108811	4%
01-7130	1.5 8 Hole Orbital	€ 91,00	P9099	108811	4%
01-7070	1.5 10 Hole Orbital	€ 79,00	P9099	108811	4%
01-7071	1.5 2/2 Hole Left Reg L	€ 79,00	P9099	108811	4%
01-7074	1.5 2/2 Hole Right Reg L	€ 79,00	P9099	108811	4%
01-7075	1.5 2/2 Hole Left Med L	€ 79,00	P9099	108811	4%
01-7078	1.5 2/2 Hole Right Med L	€ 79,00	P9099	108811	4%
01-7079	1.5 2/2 Hole Left Long L	€ 79,00	P9099	108811	4%
01-7032	1.5 2/2 Hole Right Long L	€ 76,00	P9099	108811	4%
01-7033	1.5 3/3 Hole 100* Left Med L	€ 76,00	P9099	108811	4%
01-7034	1.5 3/3 Hole 100* Right Med L	€ 64,00	P9099	108811	4%
01-7035	1.5 3/3 Hole 100* Left Long L	€ 64,00	P9099	108811	4%
01-7036	1.5 3/3 Hole 100* Right Long L	€ 64,00	P9099	108811	4%
01-7037	1.5 3/3 Hole 100* Left Xlong L	€ 76,00	P9099	108811	4%
01-7085	1.5 3/3 Hole 100* Right Xlongl	€ 64,00	P9099	108811	4%
01-7086	1.5 2/2 Hole Left Med Z	€ 64,00	P9099	108811	4%
01-7090	1.5 2/2 Hole Right Med Z	€ 79,00	P9099	108811	4%
01-7100	1.5 3/3 Hole Reg T	€ 91,00	P9099	108811	4%
01-7102	1.5 5 Hole Reg Y	€ 91,00	P9099	108811	4%
01-7104	1.5 5 Hole Long Y	€ 91,00	P9099	108811	4%
01-7110	1.5 5 Hole Xlong Y	€ 91,00	P9099	108811	4%
01-7112	1.5 6 Hole Reg Double Y	€ 91,00	P9099	108811	4%
01-7114	1.5 6 Hole Long Double Y	€ 91,00	P9099	108811	4%
01-7096	1.5 6 Hole Xlong Double Y	€ 76,00	P9099	108811	4%
01-6480	1.5 7/7 Hole Reg T	€ 140,00	P9099	108811	4%
01-6482	1.5/0.6 Flat Lefort Plate	€ 140,00	P9099	108811	4%

01-6483	1.5/0.6 2mm Lefort Plate	€ 140,00	P9099	108811	4%
01-6484	1.5/0.6 3mm Lefort Plate	€ 140,00	P9099	108811	4%
01-6485	1.5/0.6 4mm Lefort Plate	€ 140,00	P9099	108811	4%
01-6486	1.5/0.6 5mm Lefort Plate	€ 140,00	P9099	108811	4%
01-6487	1.5/0.6 6mm Lefort Plate	€ 140,00	P9099	108811	4%
01-6489	1.5/0.6 7mm Lefort Plate	€ 140,00	P9099	108811	4%
01-6491	1.5/0.6 9mm Lefort Plate	€ 140,00	P9099	108811	4%
01-7131	1.5/0.6 11mm Lefort Plate	€ 91,00	P9099	108811	4%
01-7132	1.5 4 Hole Square	€ 76,00	P9099	108811	4%
01-7120	1.5 3 Hole Triangle	€ 76,00	P9099	108811	4%
01-7092	1.5 4 Hole X	€ 76,00	P9099	108811	4%
01-7093	1.5 4 Hole Reg Double T	€ 91,00	P9099	108811	4%
01-7357	1.5 4 Hole Long Double T	€ 64,00	P9099	108811	4%
01-7359	1.5 4 Hole Wide Strut Square	€ 64,00	P9099	108811	4%
01-7306	1.5 4 Hole Rectangle	€ 102,00	P9099	108811	4%
01-7308	1.5 13mm Burr Hole	€ 136,00	P9099	108811	4%
01-7309	1.5 18.5mm Burr Hole	€ 151,00	P9099	108811	4%
01-7068	1.5 22mm Burr Hole	€ 162,00	P9099	108811	4%
01-7340	1.5 20 Hole Straight	€ 222,00	P9099	108811	4%
01-7341	1.0/1.5mm Ti Sheet 85 X 50	€ 726,00	P9099	108811	4%
01-7250	1.0/1.5mm Ti Sheet 203 X 127	€ 1.388,00	P9099	108811	4%
01-7251	1.5/0.3 206x123mm Contour Mesh	€ 1.388,00	P9099	108811	4%
01-7017	1.5/0.6 206x123mm Contour Mesh	€ 324,00	P9099	108811	4%
01-7065	40mm Square Ultra Prec. Mesh	€ 1.467,00	P9099	108811	4%
01-7069	Ultra Precontoured Mesh 0.3mm	€ 1.471,00	P9099	108811	4%
01-7182	Ultra Precontoured Mesh	€ 243,00	P9099	108811	4%
01-7185	1.5/0.6 85x53mm Small Panel	€ 231,00	P9099	108811	4%
01-7106	1.5/0.3 85x53mm Small Panel	€ 187,00	P9099	108811	4%
01-7107	Sm Orbital Floor Mesh	€ 187,00	P9099	108811	4%
01-7108	Med Orbital Floor Mesh	€ 187,00	P9099	108811	4%
01-7109	Lrg Orbital Floor Mesh	€ 187,00	P9099	108811	4%
01-7180	Noe Mesh	€ 224,00	P9099	108811	4%
	Regular Grid Panel .6x80x53mm				
95-1503	1.5mm HT X-Drive Screws	€ 110,00	P9099	108811	4%
95-1504	1.5x3.5mm Ht X-dr Scr,5/pk	€ 110,00	P9099	108811	4%
95-1505	1.5x4mm Ht X-dr Scr,5/pk	€ 110,00	P9099	108811	4%
95-1506	1.5x5mm Ht X-dr Scr,5/pk	€ 110,00	P9099	108811	4%
95-1507	1.5x6mm Ht X-dr Scr,5/pk	€ 110,00	P9099	108811	4%
95-1508	1.5x7mm Ht X-dr Scr,5/pk	€ 110,00	P9099	108811	4%
95-1509	1.5x8mm Ht X-dr Scr,5/pk	€ 110,00	P9099	108811	4%
95-1511	1.5x9mm Ht X-dr Scr,5/pk	€ 110,00	P9099	108811	4%
95-1513	1.5x11mm Ht X-dr Scr,5/pk	€ 110,00	P9099	108811	4%
95-1515	1.5x13mm Ht X-dr Scr,5/pk	€ 136,00	P9099	108811	4%
95-1803	1.5x15mm Ht X-dr Scr,5/pk	€ 110,00	P9099	108811	4%
95-1805	1.8x3.5mm Ht X-dr Scr,5/pk	€ 110,00	P9099	108811	4%
95-1807	1.8x5mm Ht X-dr Scr,5/pk	€ 196,00	P9099	108811	4%
95-1809	1.8x7mm Ht X-dr Scr,5/pk	€ 95,00	P9099	108811	4%
	1.8x9mm Ht X-dr Scr,5/pk				
95-6103	1.5mm HT X-Drive Self-Drilling Screws	€ 181,00	P9099	108811	4%
95-6104	1.5x3.5mm Ht Sd X-dr Scr,5-pk	€ 181,00	P9099	108811	4%
95-6105X	1.5x4mm Ht Sd X-dr Scr,5-pk	€ 181,00	P9099	108811	4%



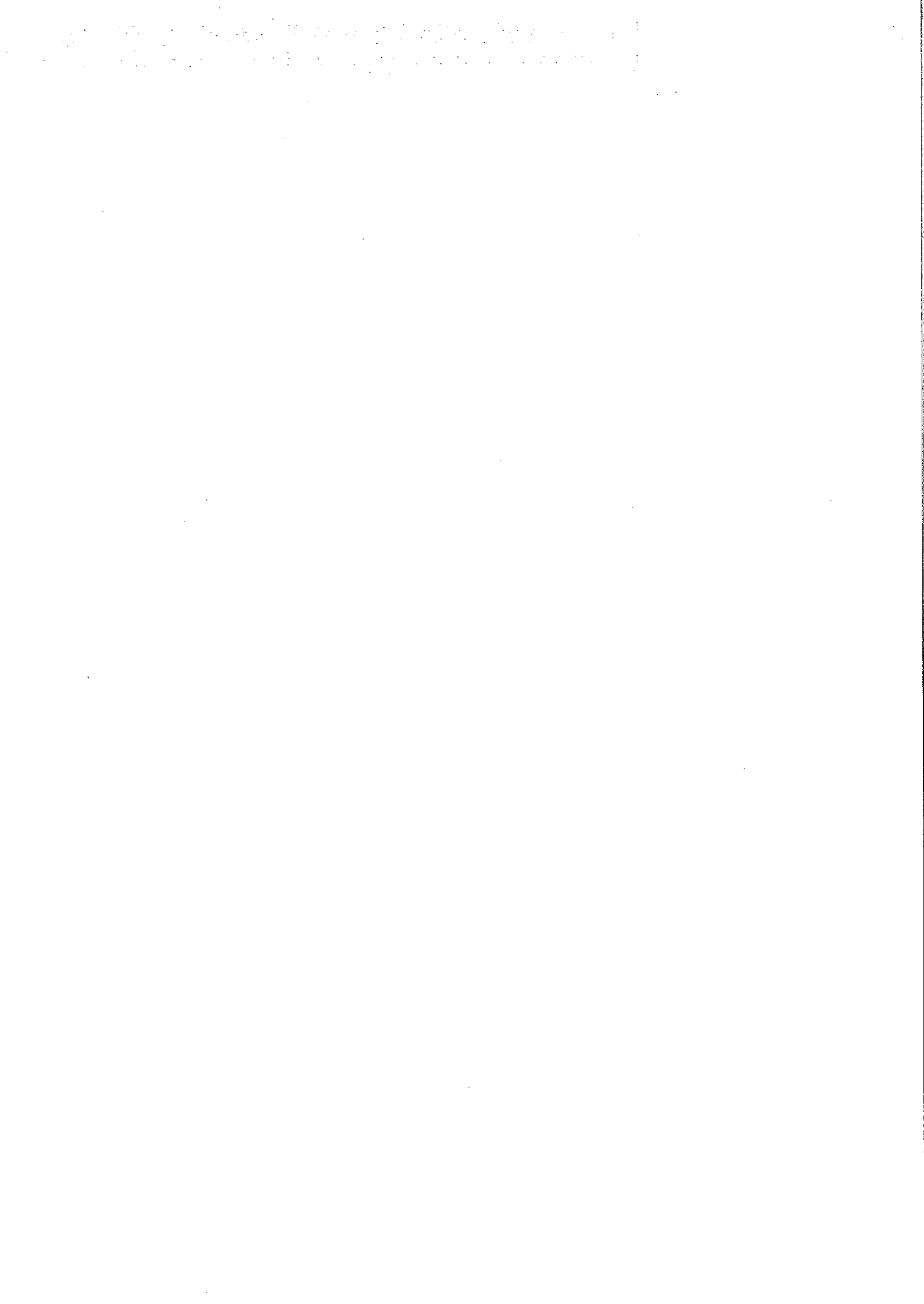
95-6106	1.65x5mm Ht Sd X-dr Scr, 5-pk	€ 181,00	P9099	108811	4%
95-6107	1.5x6mm Ht Sd X-dr Scr,5-pk	€ 185,00	P9099	108811	4%
	1.5x7mm Ht Sd X-dr Scr,5-pk				
01-7203	1.5mm Center-Drive Screws	€ 121,00	P9099	108811	4%
01-7204	Lp C-dr Screw,1.5x3.5mm,5/pk,1	€ 128,00	P9099	108811	4%
01-7205	Lp C-dr Screw,1.5x4mm,5/pk,1.5	€ 132,00	P9099	108811	4%
01-7206	Lp C-dr Screw,1.5x5mm,5/pk,1.5	€ 125,00	P9099	108811	4%
01-7207	Lp C-dr Screw,1.5x6mm,5/pk,1.5	€ 147,00	P9099	108811	4%
01-7208	Lp Lc-d Screw,1.5x7mm,5/pk,1.5	€ 158,00	P9099	108811	4%
01-7209	Lp C-dr Screw,1.5x8mm,5/pk,1.5	€ 147,00	P9099	108811	4%
01-7211	Lp C-dr Screw,1.5x9mm,5/pk,1.5	€ 147,00	P9099	108811	4%
01-7213	Lp C-dr Screw,1.5x11mm,5pk,1.5	€ 166,00	P9099	108811	4%
01-7215	Lp C-dr Screw,1.5x13mm,5/pk,1.	€ 158,00	P9099	108811	4%
01-7223	Lp C-dr Screw,1.5x15mm,5/p,1.5	€ 128,00	P9099	108811	4%
01-7225	Lp C-dr Emer Screw,1.8x3.5mm,5	€ 106,00	P9099	108811	4%
01-7227	Lp C-dr Emer Screw,1.8x5mm,5/p	€ 106,00	P9099	108811	4%
	Lp C-dr Emer Screw,1.8x7mm,5/p				
01-7283	1.5mm Center-Drive Self-Drilling Screws	€ 151,00	P9099	108811	4%
01-7284	Sd,c-dr Screw 1.5x3.5mm,5/pk	€ 185,00	P9099	108811	4%
01-7285	Sd,c-dr Screw 1.5x4.0mm,5/pk	€ 185,00	P9099	108811	4%
	Sd,c-dr Screw 1.5x5.0mm,5/pk				
01-7141	Twist Drills	€ 132,00	L091099	108819	22%
01-7142	Tw Drill,1.1x50mm,3.5mmstop,w/	€ 132,00	L091099	108819	22%
01-7143	Tw Drill,1.1x50mm,5mmstop,w/nt	€ 113,00	L091099	108819	22%
01-7144	Drill, 1.0x38,3.5mm, Stp,mrg3	€ 132,00	L091099	108819	22%
01-7145	Tw Drill,1.1x50mm,7mmstop,w/nt	€ 113,00	L091099	108819	22%
01-7146	Drill, 1.0x38,5.0mm Stp,mrg3	€ 132,00	L091099	108819	22%
01-7148	Tw Drill,1.1x50mm,9mmstop,w/nt	€ 132,00	L091099	108819	22%
01-7149	Tw Drill,1.1x50mm,15mmstp,w/nt	€ 140,00	L091099	108819	22%
01-7393	Tw Drill,1.1x105mm 18mm Stp	€ 140,00	L091099	108819	22%
01-7394	Drill 1.1x87mm,3mm Stp,hall	€ 140,00	L091099	108819	22%
01-7395	Bmaxdrill1.1x104mm,5.0mm Stp	€ 155,00	L091099	108819	22%
01-7397	Drill,1.1x87mm,5mm Stp, Hall	€ 140,00	L091099	108819	22%
01-7143	Drill,1.1x97mm,7mm Stp,hall	€ 113,00	L091099	108819	22%
01-7144	Drill, 1.0x38,3.5mm, Stp,mrg3	€ 132,00	L091099	108819	22%
01-7145	Tw Drill,1.1x50mm,7mmstop,w/nt	€ 113,00	L091099	108819	22%
01-7139	Drill, 1.0x38,5.0mm Stp,mrg3	€ 113,00	L091099	108819	22%
01-6950	Twist Drill,1.1mm,5mm Stop,m-r	€ 121,00	L091099	108819	22%
01-6951	Contra Drill, 1.1x8mm Stp	€ 121,00	L091099	108819	22%
	Contra Drill, 1.1x16mm Stp				
01-8046	2.0mm Plates	€ 61,00	P9099	108811	4%
01-9204	2.0/0.6 2 Hole Med Neuro	€ 53,00	P9099	108811	4%
01-9205	2.0/1.0 4 Hole Reg	€ 64,00	P9099	108811	4%
01-9206	2.0/1.0 4 Hole Long	€ 72,00	P9099	108811	4%
01-9288	2.0/1.0 6 Hole Reg	€ 61,00	P9099	108811	4%
01-9215	2.0/1.0 4 Hole Med	€ 102,00	P9099	108811	4%
01-9230	2.0/1.0 4 Hole Xlong	€ 76,00	P9099	108811	4%
01-9231	2.0/1.0 2/2 Hole Right Reg L	€ 76,00	P9099	108811	4%
01-9232	2.0/1.0 2/2 Hole Left Reg L	€ 79,00	P9099	108811	4%
01-9290	2.0/1.0 2/2 Hole Right Long L	€ 79,00	P9099	108811	4%
01-9291	2.0/1.0 2/2 Hole Right Med L	€ 76,00	P9099	108811	4%
01-9292	2.0/1.0 8 Hole Med	€ 79,00	P9099	108811	4%

01-8094	2.0/1.0 2/2 Hole Left Med L	€ 106,00	P9099	108811	4%
01-8095	2.0/0.6 3/3 Hole Right Med L	€ 106,00	P9099	108811	4%
01-8096	2.0/0.6 3/3 Hole Left Med L	€ 106,00	P9099	108811	4%
01-8097	2.0/0.6 3/3 Hole Right Long L	€ 106,00	P9099	108811	4%
01-9240	2.0/0.6 3/3 Hole Left Long L	€ 106,00	P9099	108811	4%
01-9241	2.0/1.0 3/3 Hole Reg T	€ 87,00	P9099	108811	4%
01-8091	2.0/1.0 2/3 Hole Long T	€ 102,00	P9099	108811	4%
01-8092	2.0/0.6 2/5 Hole 90* Med T	€ 102,00	P9099	108811	4%
01-8081	2.0/0.6 2/5 Hole 90* Long T	€ 76,00	P9099	108811	4%
01-8082	2.0/0.6 2/2 Hole Left Reg Z	€ 76,00	P9099	108811	4%
01-8083	2.0/0.6 2/2 Hole Right Reg Z	€ 76,00	P9099	108811	4%
01-8084	2.0/0.6 2/2 Hole Left Long Z	€ 76,00	P9099	108811	4%
01-9250	2.0/0.6 2/2 Hole Right Long Z	€ 91,00	P9099	108811	4%
01-9251	2.0/1.0 5 Hole Reg Y	€ 102,00	P9099	108811	4%
01-8070	2.0/1.0 5 Hole Long Y	€ 79,00	P9099	108811	4%
01-8072	2.0/0.6 5 Hole Reg Y	€ 98,00	P9099	108811	4%
01-8073	2.0/0.6 6 Hole Reg Double Y	€ 83,00	P9099	108811	4%
01-9260	2.0/0.6 6 Hole Long Double Y	€ 98,00	P9099	108811	4%
01-9262	2.0/1.0 6 Hole Reg Double Y	€ 106,00	P9099	108811	4%
01-9222	2.0/1.0 6 Hole Long Double Y	€ 64,00	P9099	108811	4%
01-9224	2.0/1.0 4 Hole Med Curved	€ 95,00	P9099	108811	4%
01-9226	2.0/1.0 6 Hole Reg Curved	€ 91,00	P9099	108811	4%
01-8019	2.0/1.0 6 Hole Curved Med	€ 91,00	P9099	108811	4%
01-8066	2.0/0.6 8 Hole Orbital	€ 151,00	P9099	108811	4%
01-8068	2.0/0.5 13mm Burr Hole	€ 181,00	P9099	108811	4%
01-8065	2.0/0.5 17mm Burr Hole	€ 91,00	P9099	108811	4%
01-9272	2.0/0.6 2/2 Hole Reg Double T	€ 106,00	P9099	108811	4%
01-9278	2.0/1.0 2x2 Matrix	€ 140,00	P9099	108811	4%
01-9280	2.0/1.0 2x6 Short Matrix Plat	€ 106,00	P9099	108811	4%
01-9281	2.0/1.0 2x6 Curved Matrix	€ 140,00	P9099	108811	4%
01-9285	2.0/1.0 2x8 Short Matrix Plat	€ 189,00	P9099	108811	4%
01-9228	2.0/1.0 2x8 Curved Matrix	€ 110,00	P9099	108811	4%
01-9229	2.0/1.0 6 Hole Angled Med	€ 98,00	P9099	108811	4%
01-9282	2.0/1.0 8 Hole Angled Med	€ 125,00	P9099	108811	4%
01-9284	2.0/1.0 4 Hole Med Compression	€ 123,00	P9099	108811	4%
01-9285	2.0/1.0 4hole Long Compression	€ 189,00	P9099	108811	4%
01-9286	2.0/1.0 2x8 Curved Matrix	€ 140,00	P9099	108811	4%
01-9291	2.0/1.0 6 Hole Med Compression	€ 76,00	P9099	108811	4%
01-9208	2.0/1.0 8 Hole Med	€ 102,00	P9099	108811	4%
01-9216	2.0/1.0 8 Hole Reg	€ 147,00	P9099	108811	4%
01-8013	2.0/1.0 16hole Reg	€ 76,00	P9099	108811	4%
01-8014	2.0/0.6 8 Hole Reg Straight	€ 166,00	P9099	108811	4%
01-8058	2.0/0.6 16 Hole Reg Straight	€ 91,00	P9099	108811	4%
01-9207	2.0/0.6 6 Hole Long Straight	€ 83,00	P9099	108811	4%
01-6358	2.0/1.0 6 Hole Long	€ 117,00	P9099	108811	4%
01-6360	2.0/0.6 2mm Paulus Chin Plate	€ 98,00	P9099	108811	4%
01-6362	2.0/0.6 4mm Paulus Chin Plate	€ 98,00	P9099	108811	4%
01-6364	2.0/0.6 6mm Paulus Chin Plate	€ 98,00	P9099	108811	4%
01-6366	2.0/0.6 8mm Paulus Chin Plate	€ 98,00	P9099	108811	4%
01-6368	2.0/0.6 10mm Paulus Chin Plate	€ 98,00	P9099	108811	4%
01-6370	2.0/0.6 12mm Paulus Chin Plate	€ 98,00	P9099	108811	4%
01-6372	2.0/0.6 14mm Paulus Chin Plate	€ 98,00	P9099	108811	4%
01-6471	2.0/0.6 16mm Paulus Chin Plate	€ 121,00	P9099	108811	4%

01-6472	2.0/.6 11mm Dual Rail Chin Pla	€ 121,00	P9099	108811	4%
01-6473	2.0/6 2mm Dual Rail Chin Plate	€ 121,00	P9099	108811	4%
01-6474	2/0.6 3mm Dual Rail Chin Plate	€ 121,00	P9099	108811	4%
01-6475	2/0.6 4mm Dual Rail Chin Plate	€ 121,00	P9099	108811	4%
01-6476	2/0.6 5mm Dual Rail Chin Plate	€ 121,00	P9099	108811	4%
01-6477	2/0.6 6mm Dual Rail Chin Plate	€ 121,00	P9099	108811	4%
01-6478	2/0.6 7mm Dual Rail Chin Plate	€ 121,00	P9099	108811	4%
01-6479	2.0/.6 8mm Dual Rail Chin Plat	€ 121,00	P9099	108811	4%
01-6452	2.0/.6 9mm Dual Rail Chin Plat	€ 87,00	P9099	108811	4%
01-6454	2.0/0.6 2mm Chin Plate	€ 98,00	P9099	108811	4%
01-6456	2.0/0.6 4mm Chin Plate	€ 98,00	P9099	108811	4%
01-6458	2.0/0.6 6mm Chin Plate	€ 98,00	P9099	108811	4%
01-6460	2.0/0.6 8mm Chin Plate	€ 98,00	P9099	108811	4%
01-6462	2.0/0.6 10mm Chin Plate	€ 98,00	P9099	108811	4%
01-6464	2.0/0.6 12mm Chin Plate	€ 98,00	P9099	108811	4%
01-6466	2.0/0.6 14mm Chin Plate	€ 98,00	P9099	108811	4%
	2.0/0.6 16mm Chin Plate				
95-2004	2.0,, HT X-Drive Screws	€ 113,00	P9099	108811	4%
95-2005	2.0x4mm Ht X-dr Screw 5/pk	€ 110,00	P9099	108811	4%
95-2007	2.0x5mm Ht X-dr Screw 5/pk	€ 121,00	P9099	108811	4%
95-2009	2.0x7mm Ht X-dr Screw 5/pk	€ 125,00	P9099	108811	4%
95-2011	2.0x9mm Ht X-dr Screw 5/pk	€ 125,00	P9099	108811	4%
95-2013	2.0x11mm Ht X-dr Screw 5/pk	€ 132,00	P9099	108811	4%
95-2015	2.0x13mm Ht X-dr Screw 5/pk	€ 132,00	P9099	108811	4%
95-2017	2.0x15mm Ht X-dr Screw 5/pk	€ 143,00	P9099	108811	4%
95-2019	2.0x17mm Ht X-dr Screw 5/pk	€ 143,00	P9099	108811	4%
95-2019T	2.0x19mm Ht X-dr Lag Scrw 5/pk	€ 121,00	P9099	108811	4%
95-2304	2.0x19mm Ht X-dr Screw 5/pk	€ 143,00	P9099	108811	4%
95-2305	2.3x4mm Ht X-dr Screw 5/pk	€ 143,00	P9099	108811	4%
95-2307	2.3x5mm Ht X-dr Screw 5/pk	€ 143,00	P9099	108811	4%
95-2309	2.3x7mm Ht X-dr Screw 5/pk	€ 143,00	P9099	108811	4%
95-2311	2.3x9mm Ht X-dr Screw 5/pk	€ 143,00	P9099	108811	4%
95-2313	2.3x11mm Ht X-dr Screw 5/pk	€ 143,00	P9099	108811	4%
95-2315	2.3x13mm Ht X-dr Screw 5/pk	€ 143,00	P9099	108811	4%
95-2317	2.3x15mm Ht X-dr Screw 5/pk	€ 151,00	P9099	108811	4%
	2.3x17mm Ht X-dr Screw 5/pk				
95-6204	2.0mm HT Self-Drilling Screws	€ 204,00	P9099	108811	4%
95-6205	2.0x4mm Ht Sd X-dr Scr,5/pk	€ 204,00	P9099	108811	4%
95-6207	2.0x5mm Ht Sd X-dr Scr,5/pk	€ 204,00	P9099	108811	4%
	2.0x7mm Ht Sd X-dr Scr,5/pk				
95-5305	2.0mm Self-Drilling IMF Screws	€ 237,00	P9099	108811	4%
95-5307	2.0x5mm Sd Imf Screw,5pk	€ 237,00	P9099	108811	4%
95-5309	2.0x7mm Sd Imf Screw,5pk	€ 237,00	P9099	108811	4%
95-5311	2.0x9mm Sd Imf Screw,5pk	€ 237,00	P9099	108811	4%
	2.0x11mm Sd Imf Screw,5pk				
95-5213	2.0mm IMF Screws	€ 222,00	P9099	108811	4%
95-5215	2.0 X 13mm Imf Screw, 5/pk	€ 418,00	P9099	108811	4%
	2.0x15mmimf Screw,5/pk				
01-9474	2.0mm Center-Drive Screws	€ 403,00	P9099	108811	4%
01-9475	Ctr-driv Screw,2.0x4mm,10/pk,2.	€ 486,00	P9099	108811	4%
01-9477	Ctr-driv Screw,2.0x5mm,10/pkg,2	€ 486,00	P9099	108811	4%
01-9479	Ctr-driv Screw,2.0x7mm,10pk,2.0	€ 403,00	P9099	108811	4%

01-9481	Ctr-drv Screw,2.0x9mm,10/pk,2.	€ 403,00	P9099	108811	4%
01-9483	Ctr-drv Screw,2.0x11mm,10/pk,2	€ 403,00	P9099	108811	4%
01-9485	Ctr-drv Screw,2.0x13mm,10/pk,2	€ 403,00	P9099	108811	4%
01-9487	Ctr-drv Screw,2.0x15mm,10/pk,2	€ 414,00	P9099	108811	4%
01-9489	Ctr-drv Screw,2.0x17mm,10/pk,2	€ 414,00	P9099	108811	4%
01-9495	Ctr-drv Screw,2.0x19mm,10/pk,2	€ 486,00	P9099	108811	4%
01-9497	Ctr-drv Emer Screw,2.3x5mm,10/	€ 377,00	P9099	108811	4%
01-9499	Ctr-drv Emer Screw,2.3x7mm,10/	€ 538,00	P9099	108811	4%
	Ctr-drv Emer Screw,2.3x9mm,10/				
01-9192	Twist Drills	€ 155,00	L091099	108819	22%
01-9193	Tw Drill,1.5x50mm,5mm Stp,w/nt	€ 155,00	L091099	108819	22%
01-9195	Tw Drill,1.5x50mm,7mm Stp,w/nt	€ 155,00	L091099	108819	22%
01-9196	Tw Drill,1.5x50mm,10mmstp,w/nt	€ 155,00	L091099	108819	22%
01-9197	Drill, 1.5x50mm, 22mm Stp,j-nt	€ 155,00	L091099	108819	22%
01-9198	Drill, 1.5x70mm,40mm Stp,j-nt	€ 155,00	L091099	108819	22%
01-9199	Drill,1.5x105mm,22mm Stp,j-nt	€ 155,00	L091099	108819	22%
01-9200	Drill,1.5x105mm,5mm Stp,j-ntc	€ 132,00	L091099	108819	22%
01-9202	Drill,1.5x105mm,7mm Stp,j-ntc	€ 132,00	L091099	108819	22%
01-9203	Drill,1.5x105mm,11mm Stp,j-nt	€ 132,00	L091099	108819	22%
01-9180	Drill,1.5x115mm,37mm Stp,j-nt	€ 155,00	L091099	108819	22%
01-9181	Contra Drill 1.5x7.5mm Stp	€ 155,00	L091099	108819	22%
01-9182	Contra Drill 1.5x15.5mm Stp	€ 155,00	L091099	108819	22%
01-9185	Contra Drill 1.5x18.5mm Stp	€ 155,00	L091099	108819	22%
	Twist Drill,1.5mm,5mm Stop,m-r				
01-7164	Insrtuments	€ 741,00	L091099	108819	22%
24-1189	1.5mm/2.0mm Screwdriver Handle	€ 1.317,00	L091099	108819	22%
15-0280	90 Deg Contra Angle Screwdrivr	€ 279,00	L091099	108819	22%
15-0281	Small Orbital Floor Retractor	€ 279,00	L091099	108819	22%
01-7390	Medium Orbital Floor Retractor	€ 674,00	L091099	108819	22%
01-9095	Green 1.5/2.0 Handle	€ 279,00	L091099	108819	22%
24-2556	Beuse Plate Holding Forceps -	€ 888,00	L091099	108819	22%
01-7600	Snap On Cheek Retractor	€ 741,00	L091099	108819	22%
24-9905	2.0/2.4 Mm Screwdriver Handle	€ 1.595,00	L091099	108819	22%
01-9123	2.0-2.4 T Handle Driver	€ 1.152,00	L091099	108819	22%
01-2556	Depth Gage 1.5/2.0,45mm,long	€ 696,00	L091099	108819	22%
24-1126	Cheek Retr,semi Rigid,mod Troc	€ 200,00	L091099	108819	22%
24-1128	2.0mm Drill Guide,small	€ 352,00	L091099	108819	22%
20-1140	2.0 Plate Hold On Cannula, Sm	€ 659,00	L091099	108819	22%
01-7171	2.0 Trocar Handle	€ 255,00	L091099	108819	22%
01-7176	Short 1.5 C-drive Blade	€ 224,00	L091099	108819	22%
01-7186	Stp 1.5 C-drive Blade	€ 237,00	L091099	108819	22%
15-1193	1.5 Mm Plate Holding Wand	€ 173,00	L091099	108819	22%
15-1194	1.5 Mm Ht X-lock Contra Blade	€ 155,00	L091099	108819	22%
15-1196	1.5 Mm Ht X-lock Short Blade	€ 155,00	L091099	108819	22%
01-9086	1.5 Mm Ht X-lock Std Blade	€ 331,00	L091099	108819	22%
01-9047	2.0 Plate Holding Wand	€ 151,00	L091099	108819	22%
01-9048	Blade,ctr-drv,2.0	€ 410,00	L091099	108819	22%
01-9049	Tap Blade,w/o HdI,ctr-drv,2.0	€ 275,00	L091099	108819	22%
20-1193	Contra Angle Blade,ctr-drv,2.0	€ 173,00	L091099	108819	22%
20-1194	2.0mm Ht X Drive Contra Blade	€ 140,00	L091099	108819	22%
20-1196	2.0mm Ht X-lock Short Blade	€ 140,00	L091099	108819	22%

20-1199	2.0mm Ht X-lock Long Blade	€ 674,00	L091099	108819	22%
01-7167	2.0mm Imf Guide Sleeve	€ 395,00	L091099	108819	22%
01-7465	1.5mm, 3-prong Plate Bender	€ 410,00	L091099	108819	22%
01-9960	1.0/1.5mm Plate Bending Plier	€ 1.151,00	L091099	108819	22%
01-9070	Plate & Wire Cut Forcep	€ 395,00	L091099	108819	22%
01-9728	2.0mm, 3-prong Plate Bender	€ 377,00	L091099	108819	22%
	2.0 Plate Bending Pliers				
46-1501	Container/Trays	€ 2.328,00	L091099	108819	22%
46-1502	Midface Screw Container	€ 2.125,00	L091099	108819	22%
46-1503	Midface Plate Container	€ 2.273,00	L091099	108819	22%
46-1504	Traumaone Mandible Screw Cont	€ 2.125,00	L091099	108819	22%
46-1611	Traumaone Mandible Plate Cont	€ 821,00	L091099	108819	22%
46-1620	Midface Insert Tray	€ 1.539,00	L091099	108819	22%
46-1621	Trauma1 Outer Tray, Mandibular	€ 1.021,00	L091099	108819	22%
	Mandibular Insert Tray				



**GARA REGIONALE PER LA FORNITURA DI  
"MATERIALE DI CONSUMO PER CHIRURGIA MAXILLO  
FACCIALE"**

N° gara 5562108 - CIG 5720512BD4

**NEUROMED LOTTO 2 - Prodotti listino -**

**Listino Biomet Microfixation  
ns.rif. 168-191015BM**

codice	CMF System	APPLICARE SCONTO DEL 30%			
		Prezzo €	CND	N.rep.	Iva
	1.0mm Plates				
01-7340	1.0/1.5mm Ti Sheet 85 X 50	€ 222,00	P9099	108811	4%
01-7341	1.0/1.5mm Ti Sheet 203 X 127	€ 726,00	P9099	108811	4%
01-7580	1.0/0.6 83mmx51mm Mesh Panel	€ 734,00	P9099	108811	4%
01-7585	1.0/0.3 83mmx51mm Mesh Panel	€ 734,00	P9099	108811	4%
01-7504	1.0 4 Hole Straight	€ 76,00	P9099	108811	4%
01-7516	1.0 16 Hole Straight	€ 121,00	P9099	108811	4%
01-7524	1.0 24 Hole Straight	€ 177,00	P9099	108811	4%
01-7530	1.0 3/2 Hole Right L	€ 106,00	P9099	108811	4%
01-7531	1.0 3/2 Hole Left L	€ 106,00	P9099	108811	4%
01-7532	1.0 5/3 Hole Right L	€ 121,00	P9099	108811	4%
01-7533	1.0 5/3 Hole Left L	€ 121,00	P9099	108811	4%
01-7540	T-plate 5-hole, Regular	€ 121,00	P9099	108811	4%
01-7541	1.0 4/3 Hole T-shape	€ 121,00	P9099	108811	4%
01-7548	1.0 Double T Shape	€ 121,00	P9099	108811	4%
01-7550	1.0 Y Shape	€ 121,00	P9099	108811	4%
01-7560	1.0 Double Y Shape, Reg	€ 121,00	P9099	108811	4%
01-7562	1.0 Double Y 7 Hole Regular	€ 121,00	P9099	108811	4%
01-7568	1.0 8 Hole, Orbital	€ 121,00	P9099	108811	4%
01-7570	1.0 4 Hole, Square	€ 121,00	P9099	108811	4%
01-7572	1.0 2/3 Hole, Rectangular	€ 121,00	P9099	108811	4%
01-7574	1.0 2/4 Hole, Rectangular	€ 121,00	P9099	108811	4%
01-7576	1.0/0.5 13mm Burr Hole	€ 151,00	P9099	108811	4%
01-7578	1.0/0.5 17mm Burr Hole	€ 192,00	P9099	108811	4%
	1.0mm Cross-Drive				
01-7402	Cross-drv Screw,1.0x2mm,5/pk,1	€ 267,00	P9099	108811	4%
01-7403	Cross-drv Screw,1.0x3mm,5/pk,1	€ 215,00	P9099	108811	4%
01-7404	Cross-drv Screw,1.0x4mm,5/pk,1	€ 215,00	P9099	108811	4%
01-7405	Cross-drv Screw,1.0x5mm,5/pk,1	€ 215,00	P9099	108811	4%
01-7406	Cross-drv Screw,1.0x6mm,5/pk,1	€ 346,00	P9099	108811	4%
01-7407	Cross-drv Screw,1.0x7mm,5/pk,1	€ 346,00	P9099	108811	4%
01-7413	Cross-drv Emer Screw,1.2x3mm,5	€ 267,00	P9099	108811	4%
01-7415	Cross-drv Emer Screw,1.2x5mm,5	€ 267,00	P9099	108811	4%
	1.0mm Center-Drive		P9099	108811	4%
01-7372	Ctr-drive Screw,1.0x2mm,5/pkg,	€ 279,00	P9099	108811	4%
01-7373	Ctr-drive Screw,1.0x3mm,5/pkg,	€ 324,00	P9099	108811	4%

01-7374	Ctr-drive Screw,1.0x4mm,5/pkg,	€ 324,00	P9099	108811	4%
01-7375	Ctr-drive Screw,1.0x5mm,5/pkg,	€ 324,00	P9099	108811	4%
01-7376	Ctr-drive Screw,1.0x6mm,5/pkg,	€ 324,00	P9099	108811	4%
01-7377	Ctr-drive Screw,1.0x7mm,5/pkg,	€ 324,00	P9099	108811	4%
01-7383	Ctr-driv Emer Screw,1.2x3mm,5/p	€ 279,00	P9099	108811	4%
01-7385	Ctr-driv Emer Screw,1.2x5mm,5/p	€ 414,00	P9099	108811	4%
	Drills-Blades				
01-7423	Tw Drill,.7x50mm,3mmstop,w/ntc	€ 155,00	L091099	108819	22%
01-7425	Tw Drill,.7x50mm,5mmstop,w/ntc	€ 155,00	L091099	108819	22%
01-7426	Tw Drill,.8x50mm,5mm Stop, 1.0	€ 298,00	L091099	108819	22%
01-7427	Tw Drill,.7x50mm,7mmstop,w/ntc	€ 155,00	L091099	108819	22%
01-7428	Tw Drill,.8x50mm,7mm Stop,1.0	€ 155,00	L091099	108819	22%
01-7446	1.0mm X-drive Screwdriver Bld	€ 166,00	L091099	108819	22%
01-7450	Blade,ctr-drive,1.0	€ 166,00	L091099	108819	22%
	Instrumentation				
01-7465	1.0/1.5mm Plate Bending Plier	€ 410,00	L091099	108819	22%
01-7172	1.0/1.5mm System Cut Plt/wr Ct	€ 267,00	L091099	108819	22%
01-7453	1.0mm Screwdriver Handle	€ 990,00	L091099	108819	22%
01-7460	1.0 Cmf 3-prong Bender	€ 463,00	L091099	108819	22%
01-9095	Beuse Plate Holding Forceps -	€ 279,00	L091099	108819	22%



**GARA REGIONALE PER LA FORNITURA DI  
"MATERIALE DI CONSUMO PER CHIRURGIA MAXILLO  
FACCIALE"**

N° gara 5562108 - CIG 5720512BD4

**NEUROMED LOTTO 2 - Prodotti listino -**

**Listino Biomet Microfixation  
ns.rif. 168-191015BM**

		APPLICARE SCONTO DEL 30%			
Codice	Mandible Plating System	Prezzo €	CND	N.rep.	IVA
	2.0mm Fracture				
01-9272	2.0/1.0 2x2 Matrix	€ 106,00	P9099	108811	4%
01-9274	2.0/1.0 2x4 Short Matrix	€ 140,00	P9099	108811	4%
01-9250	2.0/1.0 5 Hole Reg Y	€ 91,00	P9099	108811	4%
01-9278	2.0/1.0 2x6 Short Matrix Plat	€ 140,00	P9099	108811	4%
01-9280	2.0/1.0 2x6 Curved Matrix	€ 106,00	P9099	108811	4%
01-9251	2.0/1.0 5 Hole Long Y	€ 102,00	P9099	108811	4%
01-9281	2.0/1.0 2x8 Short Matrix Plat	€ 140,00	P9099	108811	4%
01-9282	2.0/1.0 4 Hole Med Compression	€ 125,00	P9099	108811	4%
01-9285	2.0/1.0 2x8 Curved Matrix	€ 189,00	P9099	108811	4%
01-9286	2.0/1.0 6 Hole Med Compression	€ 140,00	P9099	108811	4%
01-9224	2.0/1.0 6 Hole Reg Curved	€ 95,00	P9099	108811	4%
01-9216	2.0/1.0 16hole Reg	€ 147,00	P9099	108811	4%
01-9288	2.0/1.0 4 Hole Med	€ 61,00	P9099	108811	4%
01-9289	2.0/1.0 6 Hole Med	€ 57,00	P9099	108811	4%
01-9291	2.0/1.0 8 Hole Med	€ 76,00	P9099	108811	4%
01-9228	2.0/1.0 6 Hole Angled Med	€ 110,00	P9099	108811	4%
01-9229	2.0/1.0 8 Hole Angled Med	€ 98,00	P9099	108811	4%
	2.0mm Twist Drills				
01-9192	Tw Drill,1.5x50mm,5mm Stp,w/nt	€ 155,00	L091099	108819	22%
01-9193	Tw Drill,1.5x50mm,7mm Stp,w/nt	€ 155,00	L091099	108819	22%
01-9195	Tw Drill,1.5x50mm,10mmstp,w/nt	€ 155,00	L091099	108819	22%
01-9196	Drill, 1.5x50mm, 22mm Stp,j-nt	€ 155,00	L091099	108819	22%
01-9197	Drill, 1.5x70mm,40mm Stp,j-nt	€ 155,00	L091099	108819	22%
01-9198	Drill,1.5x105mm,22mm Stp,j-nt	€ 155,00	L091099	108819	22%
01-9199	Drill,1.5x105mm,5mm Stp,j-ntc	€ 155,00	L091099	108819	22%
01-9200	Drill,1.5x105mm,7mm Stp,j-ntc	€ 132,00	L091099	108819	22%
01-9202	Drill,1.5x105mm,11mm Stp,j-nt	€ 132,00	L091099	108819	22%
01-9203	Drill,1.5x115mm,37mm Stp,j-nt	€ 132,00	L091099	108819	22%
01-9180	Contra Drill 1.5x7.5mm Stp	€ 155,00	L091099	108819	22%
01-9181	Contra Drill 1.5x15.5mm Stp	€ 155,00	L091099	108819	22%
01-9182	Contra Drill 1.5x18.5mm Stp	€ 155,00	L091099	108819	22%
01-9185	Twist Drill,1.5mm,5mm Stop,m-r	€ 155,00	L091099	108819	22%
	2.0mm Blades				
20-1193	2.0mm Ht X Drive Contra Blade	€ 173,00	L091099	108819	22%
20-1194	2.0mm Ht X-lock Short Blade	€ 140,00	L091099	108819	22%

20-1196	2.0mm Ht X-lock Long Blade	€ 140,00	L091099	108819	22%
20-1199	2.0mm Imf Guide Sleeve	€ 674,00	L091099	108819	22%
	2.0mm HT X-Drive Screws				
25-2004	2.0x4mm Ht X-dr Screw 5pk	€ 117,00	P9099	108811	4%
25-2005	2.0x5mm Ht X-dr Screw 5pk	€ 117,00	P9099	108811	4%
25-2007	2.0x7mm Ht X-dr Screw 5pk	€ 117,00	P9099	108811	4%
25-2009	2.0x9mm Ht X-dr Screw 5pk	€ 128,00	P9099	108811	4%
25-2011	2.0x11mm Ht X-dr Screw 5pk	€ 128,00	P9099	108811	4%
25-2013	2.0x13mm Ht X-dr Screw 5pk	€ 136,00	P9099	108811	4%
25-2015	2.0x15mm Ht X-dr Screw 5pk	€ 136,00	P9099	108811	4%
25-2017	2.0x17mm Ht X-dr Screw 5pk	€ 136,00	P9099	108811	4%
25-2019	2.0x19mm Ht X-dr Lag Screw 5pk	€ 200,00	P9099	108811	4%
25-2019T	2.0x19mm Ht X-dr Screw 5pk	€ 166,00	P9099	108811	4%
	2.0mm HT Self-Drilling Screws				
25-6204	2.0x4mm Ht Sd Screw 5pk	€ 207,00	P9099	108811	4%
25-6205	2.0x5mm Ht Sd Screw 5pk	€ 207,00	P9099	108811	4%
25-6207	2.0x7mm Ht Sd Screw 5pk	€ 207,00	P9099	108811	4%
	2.3mm Emergency Screws				
25-2305	2.3x5mm Ht X-dr Screw 5pk	€ 173,00	P9099	108811	4%
25-2307	2.3x7mm Ht X-dr Screw 5pk	€ 173,00	P9099	108811	4%
25-2309	2.3x9mm Ht X-dr Screw 5pk	€ 173,00	P9099	108811	4%
25-2311	2.3x11mm Ht X-dr Screw 5pk	€ 173,00	P9099	108811	4%
25-2313	2.3x13mm Ht X-dr Screw 5pk	€ 173,00	P9099	108811	4%
25-2315	2.3x15mm Ht X-dr Screw 5pk	€ 173,00	P9099	108811	4%
25-2317	2.3x17mm Ht X-dr Screw 5pk	€ 173,00	P9099	108811	4%
	2.0mm Self-Drilling IMF Screws				
95-5305	2.0x5mm Sd Imf Screw,5pk	€ 237,00	P9099	108811	4%
95-5307	2.0x7mm Sd Imf Screw,5pk	€ 237,00	P9099	108811	4%
95-5309	2.0x9mm Sd Imf Screw,5pk	€ 237,00	P9099	108811	4%
95-5311	2.0x11mm Sd Imf Screw,5pk	€ 237,00	P9099	108811	4%
	2.0mm Locking Plates				
20-4504	4h Long Str Lock Plate	€ 260,00	P9099	108811	4%
20-4504T	4hlong Str Lock Plate Template	€ 64,00	P9099	108811	4%
20-4506	6h Str W/gap Locking Plate	€ 279,00	P9099	108811	4%
20-4506T	6h Str Lock Plate Template	€ 98,00	P9099	108811	4%
20-4516	16h Str Lock Plate	€ 346,00	P9099	108811	4%
20-4516T	16h Str Lock Plate Template	€ 132,00	P9099	108811	4%
20-4507	6h Angled Locking Plate	€ 294,00	P9099	108811	4%
20-4507T	6h Angled Lock Plate Template	€ 132,00	P9099	108811	4%
20-4541	5x10 Angled Lock Frac Plate,rt	€ 433,00	P9099	108811	4%
20-4540T	5x10 Angle Template	€ 166,00	P9099	108811	4%
20-4540	5x10 Angled Lock Frac Plate,lt	€ 433,00	P9099	108811	4%
20-4544	5x24x5 Locking Fracture Plate	€ 512,00	P9099	108811	4%
20-4544T	5x24x5 Double Angle Template	€ 224,00	P9099	108811	4%
	2.0mm Locking Screws				
25-2107	2.0x7mm Ht Xdr Lk-frac Sc, 5pk	€ 173,00	P9099	108811	4%
25-2109	2.0x9mm Ht Xdr Lk-frac Sc, 5pk	€ 173,00	P9099	108811	4%
25-2111	2.0x11mm Ht Xdr Lk-frac Sc,5pk	€ 173,00	P9099	108811	4%
25-2113	2.0x13mm Ht Xdr Lk-frac Sc,5pk	€ 173,00	P9099	108811	4%

25-2115	2.0x15mm Ht Xdr Lk-frc Sc,5pk	€ 173,00	P9099	108811	4%
25-2117	2.0x17mm Ht Xdr Lk-frc Sc,5pk	€ 173,00	P9099	108811	4%
	2.3mm Emergency Screws				
25-2305	2.3x5mm Ht X-dr Screw 5pk	€ 173,00	P9099	108811	4%
25-2307	2.3x7mm Ht X-dr Screw 5pk	€ 173,00	P9099	108811	4%
25-2309	2.3x9mm Ht X-dr Screw 5pk	€ 173,00	P9099	108811	4%
25-2311	2.3x11mm Ht X-dr Screw 5pk	€ 173,00	P9099	108811	4%
25-2313	2.3x13mm Ht X-dr Screw 5pk	€ 173,00	P9099	108811	4%
25-2315	2.3x15mm Ht X-dr Screw 5pk	€ 173,00	P9099	108811	4%
25-2317	2.3x17mm Ht X-dr Screw 5pk	€ 173,00	P9099	108811	4%
	2.4mm Fracture				
01-2544	Drill, 2.4x115mm,45mm Stp,j-nt	€ 155,00	L091099	108819	22%
01-9174	Lag Drill, 2.0x105mm 75mm Stp	€ 155,00	L091099	108819	22%
01-2545	Drill,1.8x10mm Stp,2.4x45.5mm	€ 155,00	L091099	108819	22%
01-2546	Drill, 1.8x5mm Stp, 2.4x45.5mm	€ 155,00	L091099	108819	22%
01-9175	Drill, 1.5x10mm Stp,2.0x33mm	€ 155,00	L091099	108819	22%
01-9176	Drill,1.5x5mm Stp,2.0x33mm	€ 155,00	L091099	108819	22%
01-9172	2.0 Lag Csk Tool	€ 173,00	L091099	108819	22%
	2.0mm Lag Screws				
25-2019	2.0x19mm Ht X-dr Lag Screw 5pk	€ 200,00	P9099	108811	4%
25-2019T	2.0x19mm Ht X-dr Screw 5pk	€ 166,00	P9099	108811	4%
25-2021	2.0x21mm Ht X-dr Lag Screw 5pk	€ 200,00	P9099	108811	4%
25-2023	2.0x23mm Ht X-dr Lag Screw 5pk	€ 264,00	P9099	108811	4%
25-2025	2.0 X 25mm Ht X-dr Lag Scw 5pk	€ 200,00	P9099	108811	4%
25-2027	2.0x27mm Ht X-dr Lag Screw 5pk	€ 264,00	P9099	108811	4%
25-2029	2.0x29mm Ht X-dr Lag Screw 5pk	€ 395,00	P9099	108811	4%
24-1080	2.0 Lag Washer	€ 49,00	P9099	108811	4%
	2.4mm Lag Screws				
85-2424	2.4mmx24mm Ht X-drlag Scrw5/pk	€ 230,00	P9099	108811	4%
85-2428	2.4mmx28mm Ht X-drlag Scrw5/pk	€ 230,00	P9099	108811	4%
85-2432	2.4mmx32mm Ht X-drlag Scrw5/pk	€ 230,00	P9099	108811	4%
85-2436	2.4mmx36mm Ht X-drlag Scrw5/pk	€ 230,00	P9099	108811	4%
85-2440	2.4mmx40mm Ht X-drlag Scrw5/pk	€ 230,00	P9099	108811	4%
24-1082	2.4 Lag Washer	€ 49,00	P9099	108811	4%
	2.4mm Fracture				
24-1050	Fracture 4 Hole Short	€ 185,00	P9099	108811	4%
24-1050T	4 Hole Short Template	€ 98,00	L091099	108819	22%
24-1052	Fracture 4 Hole Long	€ 185,00	P9099	108811	4%
24-1052T	4 Hole Long Template	€ 113,00	L091099	108819	22%
24-1054	Fracture 6 Hole Short	€ 211,00	P9099	108811	4%
24-1054T	6 Hole Short Template	€ 118,00	L091099	108819	22%
24-1056	Fracture 6 Hole Long	€ 211,00	P9099	108811	4%
24-1056T	6 Hole Long Template	€ 117,00	L091099	108819	22%
24-1058	Fracture 8 Hole Short	€ 237,00	P9099	108811	4%
24-1058T	8 Hole Short Template	€ 124,00	L091099	108819	22%
24-1060	Fracture 16 Hole	€ 440,00	P9099	108811	4%
24-1060T	16 Hole Straight Template	€ 66,00	L091099	108819	22%
24-1068	Fracture 6 Hole Curved	€ 226,00	P9099	108811	4%
24-1068T	6 Hole Curved Template	€ 119,00	L091099	108819	22%

24-1064	Fracture 6 Hole Angled	€ 215,00	P9099	108811	4%
24-1064T	6 Hole Angled Template	€ 125,00	L091099	108819	22%
24-1066	Fracture 8 Hole Angled	€ 226,00	P9099	108811	4%
24-1066T	8 Hole Angled Template	€ 67,00	L091099	108819	22%
	2.4mm Drills and Blades				
24-2050	1.8x50mm Drill,26mm Stp	€ 155,00	L091099	108819	22%
24-2115	1.8 X 115mm Drill,26mm Stp	€ 155,00	L091099	108819	22%
24-1393	2.4mm Ht X-lock Contra Blade	€ 173,00	L091099	108819	22%
24-1394	2.4/2.7mm Ht X-lock Blade Shor	€ 140,00	L091099	108819	22%
24-1396	2.4/2.7mm Ht X-lock Blade Std	€ 179,00	L091099	108819	22%
01-2526	Contra Drill, 1.8x16mm Stp	€ 155,00	L091099	108819	22%
	2.4mm Screws				
85-2406	2.4mmx6mm Ht X-dr Screw,5/pk	€ 196,00	P9099	108811	4%
85-2408	2.4mmx8mm Ht X-dr Screw,5/pk	€ 196,00	P9099	108811	4%
85-2410	2.4mmx10mm Ht X-dr Screw,5/pk	€ 196,00	P9099	108811	4%
85-2412	2.4mmx12mm Ht X-dr Screw,5/pk	€ 196,00	P9099	108811	4%
85-2414	2.4mmx14mm Ht X-dr Screw,5/pk	€ 196,00	P9099	108811	4%
85-2416	2.4mmx16mm Ht X-dr Screw,5/pk	€ 196,00	P9099	108811	4%
85-2418	2.4mmx18mm Ht X-dr Screw,5/pk	€ 230,00	P9099	108811	4%
	2.7mm Emergency Screws				
85-2706	2.7mm X 6mm Ht X-dr Screw,5pk	€ 230,00	P9099	108811	4%
85-2708	2.7mm X 8mm Ht X-dr Screw,5pk	€ 230,00	P9099	108811	4%
85-2710	2.7mm X 10mm Ht X-dr Screw,5pk	€ 230,00	P9099	108811	4%
85-2712	2.7mm X 12mm Ht X-dr Screw,5pk	€ 249,00	P9099	108811	4%
85-2714	2.7mm X 14mm Ht X-dr Screw,5pk	€ 249,00	P9099	108811	4%
85-2716	2.7mm X 16mm Ht X-dr Screw,5pk	€ 230,00	P9099	108811	4%
85-2718	2.7mm X 18mm Ht X-dr Screw,5pk	€ 230,00	P9099	108811	4%
	2.4mm Locking Screws				
85-2508	2.4mmx8mm Ht Xdr Lck Rcn Sc5pk	€ 230,00	P9099	108811	4%
85-2510	2.4mmx10mmht Xdr Lck Rcn Sc5pk	€ 230,00	P9099	108811	4%
85-2512	2.4mmx12mmht Xdr Lck Rcn Sc5pk	€ 230,00	P9099	108811	4%
85-2514	2.4mmx14mmht Xdr Lck Rcn Sc5pk	€ 230,00	P9099	108811	4%
85-2516	2.4mmx16mmht Xdr Lck Rcn Sc5pk	€ 230,00	P9099	108811	4%
85-2518	2.4mmx18mmht Xdr Lck Rcn Sc5pk	€ 200,00	P9099	108811	4%
81-2801	Locking Recon Tissue Insert	€ 49,00	P9099	108811	4%
	2.4mm Screws				
85-2406	2.4mmx6mm Ht X-dr Screw,5/pk	€ 196,00	P9099	108811	4%
85-2408	2.4mmx8mm Ht X-dr Screw,5/pk	€ 196,00	P9099	108811	4%
85-2410	2.4mmx10mm Ht X-dr Screw,5/pk	€ 196,00	P9099	108811	4%
85-2412	2.4mmx12mm Ht X-dr Screw,5/pk	€ 196,00	P9099	108811	4%
85-2414	2.4mmx14mm Ht X-dr Screw,5/pk	€ 196,00	P9099	108811	4%
85-2416	2.4mmx16mm Ht X-dr Screw,5/pk	€ 196,00	P9099	108811	4%
85-2418	2.4mmx18mm Ht X-dr Screw,5/pk	€ 230,00	P9099	108811	4%
	2.7mm Emergency Screws				
85-2706	2.7mm X 6mm Ht X-dr Screw,5pk	€ 230,00	P9099	108811	4%
85-2708	2.7mm X 8mm Ht X-dr Screw,5pk	€ 230,00	P9099	108811	4%
85-2710	2.7mm X 10mm Ht X-dr Screw,5pk	€ 230,00	P9099	108811	4%
85-2712	2.7mm X 12mm Ht X-dr Screw,5pk	€ 249,00	P9099	108811	4%
85-2714	2.7mm X 14mm Ht X-dr Screw,5pk	€ 249,00	P9099	108811	4%

85-2716	2.7mm X 16mm Ht X-dr Screw,5pk	€ 230,00	P9099	108811	4%
85-2718	2.7mm X 18mm Ht X-dr Screw,5pk	€ 230,00	P9099	108811	4%
	2.4mm Locking Recon Plates				
24-4506	6h Str Lock Recon Plate W/gap	€ 294,00	P9099	108811	4%
24-4506T	6h Str Recon Template	€ 83,00	L091099	108819	22%
24-4512	12h Straight Lock Recon Plate	€ 331,00	P9099	108811	4%
24-4512T	12h Str Recon Template	€ 132,00	L091099	108819	22%
24-4518	18h Straight Lock Recon Plate	€ 346,00	P9099	108811	4%
24-4518T	18h Str Recon Template	€ 132,00	L091099	108819	22%
24-4524	24h Straight Lock Recon Plate	€ 422,00	P9099	108811	4%
24-4524T	24h Str Recon Template	€ 166,00	L091099	108819	22%
24-4540	5x11 Angle Lock Recon Plate Lt	€ 384,00	P9099	108811	4%
24-4540T	5x11 Angle Recon Template	€ 166,00	L091099	108819	22%
24-4541	5x11 Angle Lock Recon Plate Rt	€ 380,00	P9099	108811	4%
24-4542	5x22 Angle Lock Recon Plate Lt	€ 708,00	P9099	108811	4%
24-4542T	5x22 Angle Recon Template	€ 166,00	L091099	108819	22%
24-4543	5x22 Angle Lock Recon Plate Rt	€ 708,00	P9099	108811	4%
24-4544	5x24x5 Dbl Angle Lock Recon Pl	€ 775,00	P9099	108811	4%
24-4544T	Double Angle Template	€ 83,00	L091099	108819	22%
24-4545	5x24x5 Add On Condyle Plate	€ 805,00	P9099	108811	4%
	2.4mm Drills and Blades				
24-2050	1.8x50mm Drill,26mm Stp	€ 155,00	L091099	108819	22%
24-2115	1.8 X 115mm Drill,26mm Stp	€ 155,00	L091099	108819	22%
24-1393	2.4mm Ht X-lock Contra Blade	€ 173,00	L091099	108819	22%
24-1394	2.4/2.7mm Ht X-lock Blade Shor	€ 140,00	L091099	108819	22%
24-1396	2.4/2.7mm Ht X-lock Blade Std	€ 179,00	L091099	108819	22%
01-2526	Contra Drill, 1.8x16mm Stp	€ 155,00	L091099	108819	22%
01-2691	Recon Add-on Condyle,left	€ 1.118,00	L091099	108819	22%
01-2692	Recon Add-on Condyle,right	€ 1.118,00	L091099	108819	22%
	Instrumentation				
24-1186	2.4 Plate Holding Wand	€ 313,00	L091099	108819	22%
24-1189	90 Deg Contra Angle Screwdrivr	€ 1.317,00	L091099	108819	22%
01-9086	2.0 Plate Holding Wand	€ 331,00	L091099	108819	22%
01-9095	Beuse Plate Holding Forceps -	€ 279,00	L091099	108819	22%
01-7390	Green 1.5/2.0 Handle	€ 674,00	L091099	108819	22%
01-9125	Depth Gage 2.0/2.4,45mm,long	€ 1.317,00	L091099	108819	22%
01-7600	2.0/2.4 Mm Screwdriver Handle	€ 741,00	L091099	108819	22%
24-9905	2.0-2.4 T Handle Driver	€ 1.595,00	L091099	108819	22%
24-2556	Snap On Cheek Retractor	€ 888,00	L091099	108819	22%
24-1138	Mand.sys Dbl-end Drill Guide	€ 1.518,00	L091099	108819	22%
01-2788	Plate Deburr Diamond,jnotch	€ 149,00	L091099	108819	22%
01-2556	Cheek Retr,semi Rigid,mod Troc	€ 696,00	L091099	108819	22%
24-1129	2.0 On Cannula Plate Hldr	€ 260,00	L091099	108819	22%
24-1154	2.4 Plate Hold On Cannula, Lg	€ 230,00	L091099	108819	22%
24-1144	2.4mm Trocar	€ 264,00	L091099	108819	22%
24-1130	2.0mm Tms Threaded Drill Guide	€ 260,00	L091099	108819	22%
24-1131	2.4mm Tms Threaded Drill Guide	€ 260,00	L091099	108819	22%
24-1135	2.4mm Tms Comp Drill Guide	€ 331,00	L091099	108819	22%

24-1136	Mandibular System Drill Guide	€ 260,00	L091099	108819	22%
24-1138	Mand.sys Dbl-end Drill Guide	€ 1.518,00	L091099	108819	22%
24-1141	2.4mm Trocar Handle	€ 824,00	L091099	108819	22%
24-1110	Plate Holding Forceps	€ 395,00	L091099	108819	22%
24-2550	Mandibular Bender/cutters	€ 3.949,00	L091099	108819	22%
24-1112	Bone Reduction Forceps	€ 410,00	L091099	108819	22%
01-9070	2.0mm, 3-prong Plate Bender	€ 395,00	L091099	108819	22%
01-9278	2.0/1.0 2x6 Short Matrix Plat	€ 140,00	L091099	108819	22%
24-2555	Tms Bending Iron Set	€ 1.344,00	L091099	108819	22%
46-0001	Plate Bender	€ 2.430,00	L091099	108819	22%